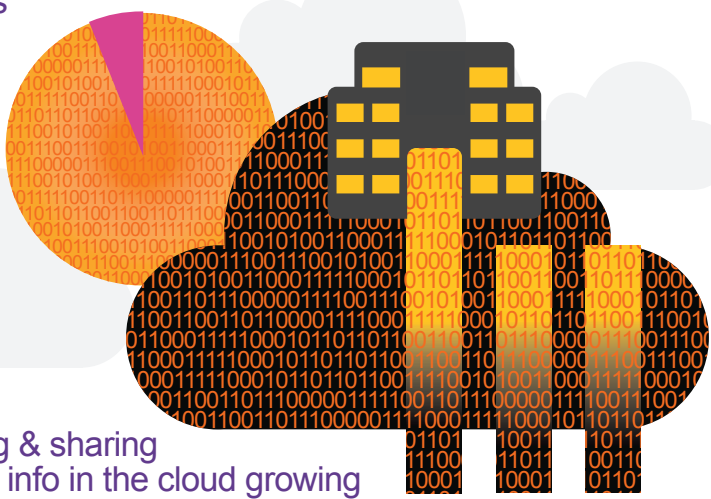


# SECURING CORPORATE DATA IN AN EXPANDING ECOSYSTEM

Remote & mobile access  
to company resources  
is nearly universal

**94%**  
HAVE  
ACCESS



Accessing & sharing  
corporate info in the cloud growing

**40%** YES    **30%** DON'T KNOW    **30%** NO

## DATA BREACH

### Perceived vulnerabilities

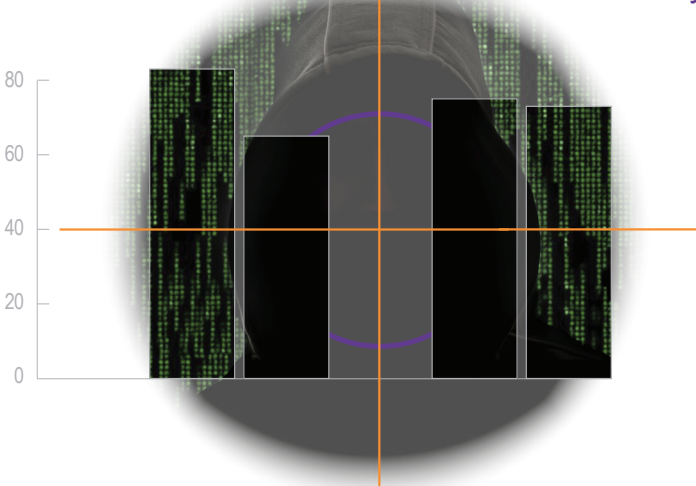
**83%** Customer information

**65%** Employee information

### Feared impacts

Diminished business reputation **75%**

Customer loyalty **73%**



## SOLUTIONS

### 1. ADVANCED AUTHENTICATION

Move security controls closer  
to the data



**91%** use  
username/password  
for authentication



**BUT**

**less than 40%**  
use more advanced  
tools for authentication

**38%** Single sign-on to enterprise applications

**36%** SMS/software 2-factor authentication

**17%** Biometric authentication

**11%** Context/risk-based authentication

**Encryption still focuses on bricks and mortar mentality:**

### 2. ENCRYPTION CLOSER TO THE DATA

**75%** Database servers

**72%** "At rest" storage

**70%** "In motion" across network

**48%** Virtualized server environments

**BUT**

**45%** Cloud based applications



### 3. PROTECT THE KEYS TO THE ENCRYPTION

Only **56%** use both hardware and software to store encryption keys.

both hardware & software **56%**

not sure **27%**

software only **11%**

hardware only **8%**

